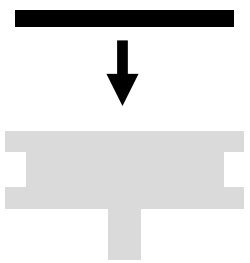


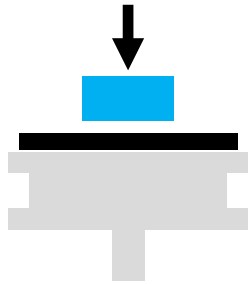
Sputter Coater – 1/5

1. Sign in on the **Sign-in Sheet** and wear **Gloves** when using **Sputter Coater**
2. Ensure each sample is “sandwiched” by **Double-sided Carbon Tape (DCT)**

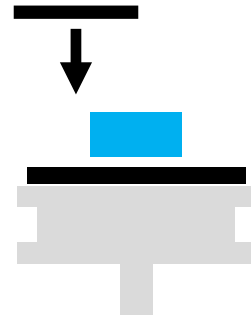
Place initial DCT on stub



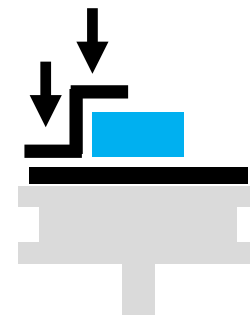
Place specimen and press down



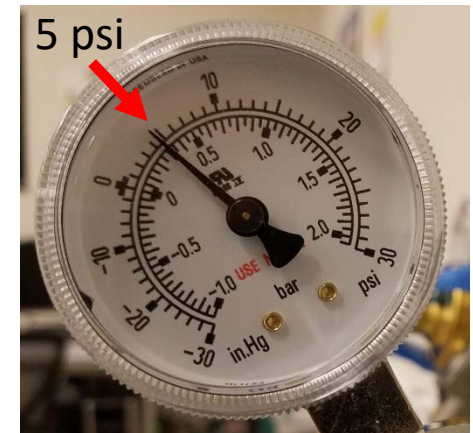
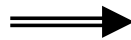
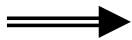
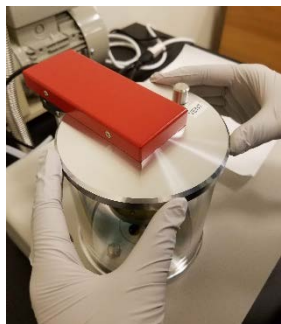
Place top DCT over sample and initial DCT



Press down on the top DCT to ensure contact

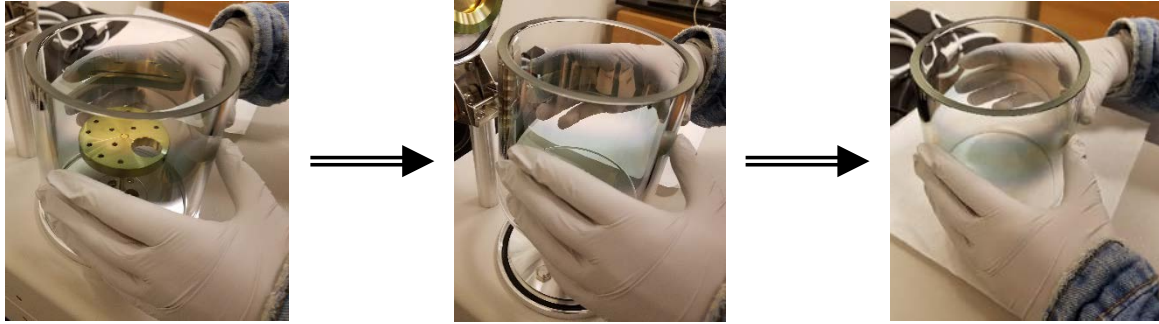


3. Check that the **Argon Regulator** is set to about **5 psi**
DO NOT ADJUST REGULARTOR YOURSELF!
4. Carefully open the **Chamber Cover** using both hands



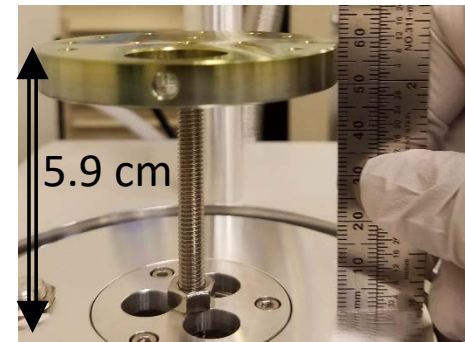
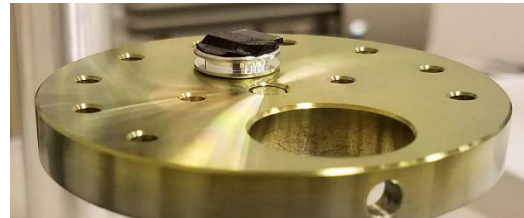
Sputter Coater – 2/5

5. Carefully remove the ***Glass Cylinder*** and place on top of lint-free paper

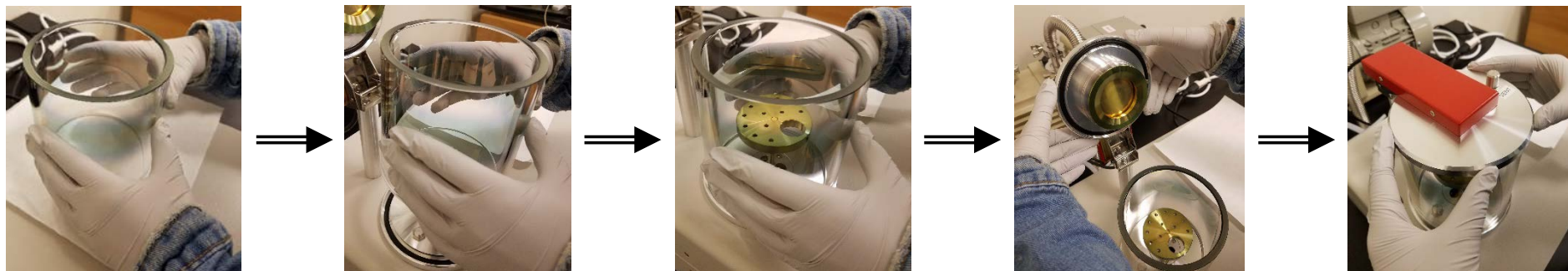


6. Check that the height of the ***Stage*** is set to about **5.9 cm**

7. Place SEM stubs on the ***Stage***



8. Carefully place ***Glass Cylinder*** back and close ***Chamber Cover*** with both hands

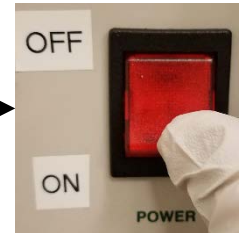


Sputter Coater – 3/5

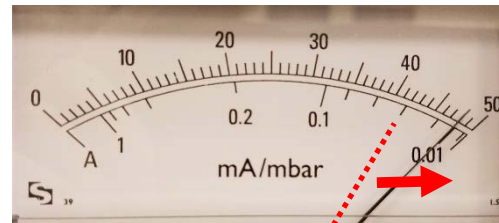
9. Confirm the **Gas Control Knob** is set to **Closed**



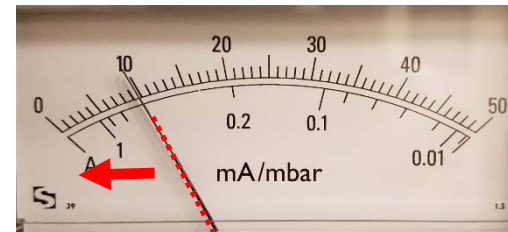
10. Turn on the **Sputter Coater** by switching to **ON** position



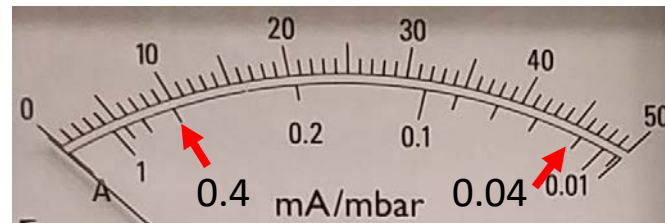
11. Allow **Chamber** to pump down to less than **0.04 mb** and hold at least **10 sec**



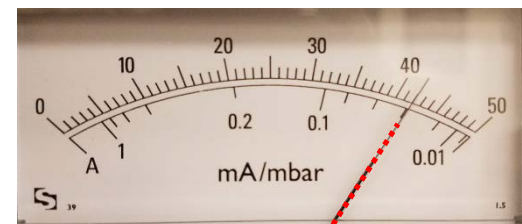
12. Adjust **Gas Control Knob** to achieve more than **0.4 mb** and hold at least **10 sec**



13. Repeat **Steps 11 – 12** to flush chamber again with Argon gas



15. Finally adjust **Gas Control Knob** back to **0.04 mb**

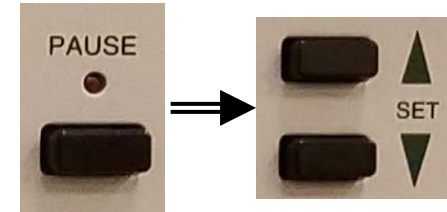


Sputter Coater – 4/5

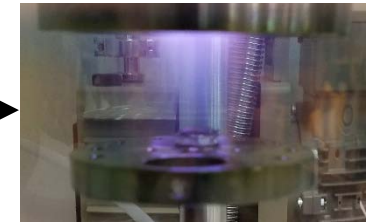
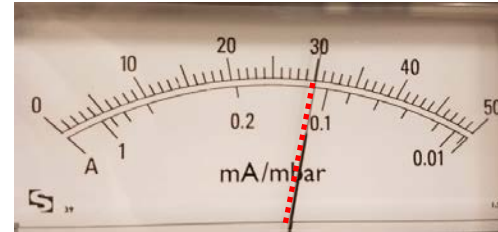
16. Check the **Timer** value is set to **10 sec**



17. If necessary, hold **PAUSE** button and reset **Timer** value using **SET** buttons

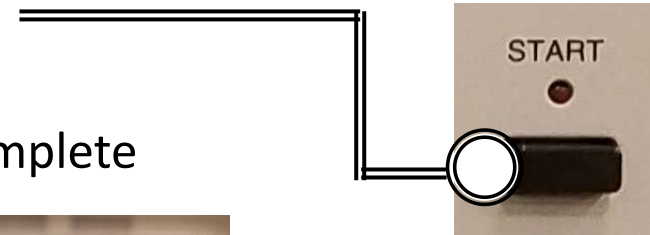


18. Briefly hold **TEST** to check sputter current is set to around **30 mA**

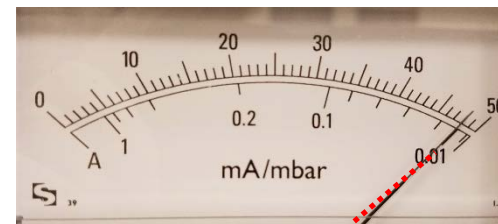


19. Press **START** to begin the Sputter Coating process

20. When the **TIMER** resets the Sputter Coating is complete



21. Close the **Gas Control Knob** and allow vacuum to reach to ~ 0.01 mb

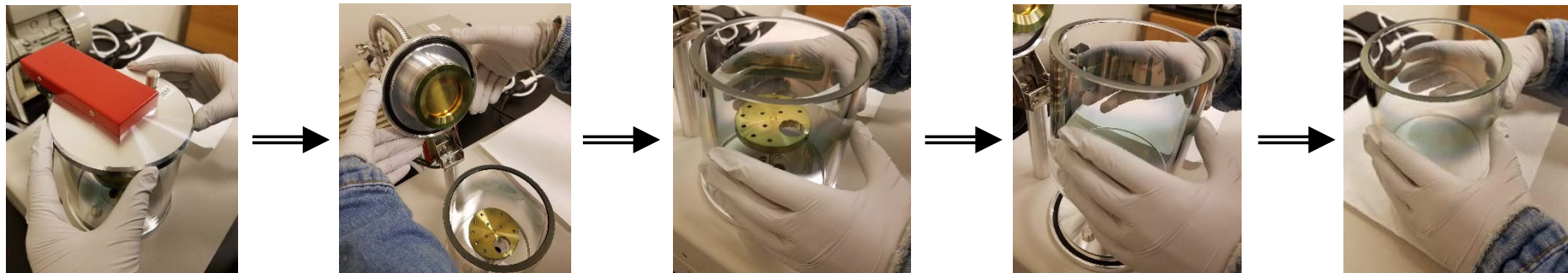
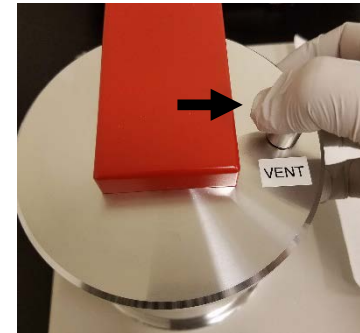


22. Turn off the **Sputter Coater** by switching to **OFF** position

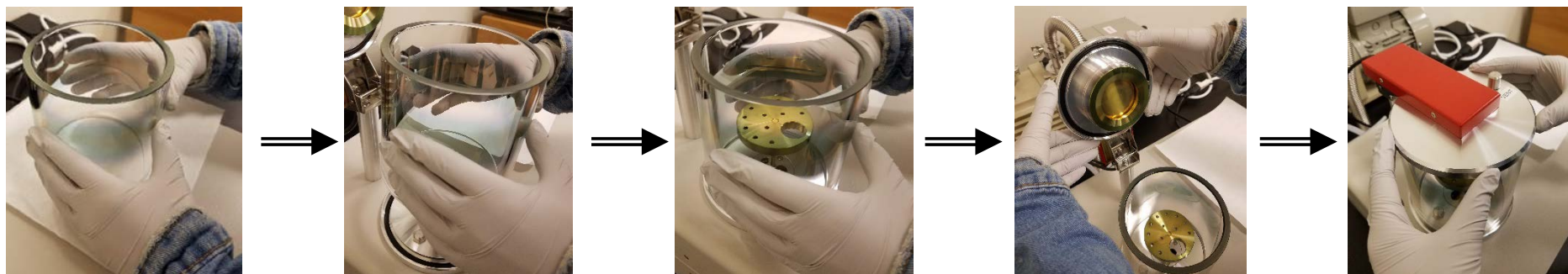


Sputter Coater – 5/5

23. Carefully **Vent** the chamber by pressing against the **Vent Knob**
24. Carefully lift the **Chamber Cover** and remove **Glass Cylinder** and place on top of the lint-free paper



25. Remove the SEM stubs
26. Carefully place **Glass Cylinder** back and close **Chamber Cover** with both hands



27. Record the **Total Sputter Time** used (in seconds) on the **Sign-in Sheet**