

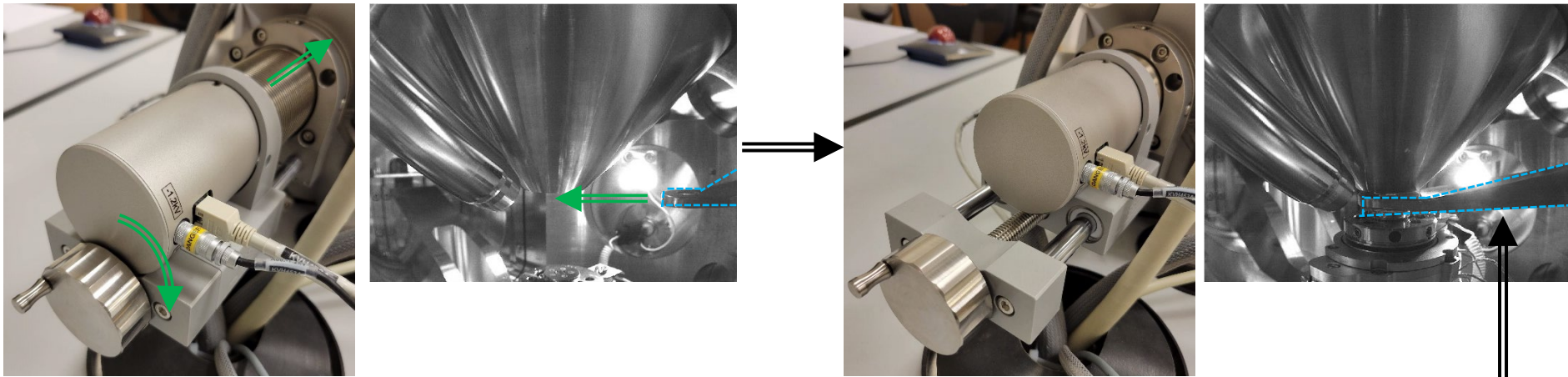
BSE Training Notebook

Lab Manager: Dr. Perry Cheung
MSE Fee-For-Service Facility
Materials Science and Engineering
University of California, Riverside

February 1, 2023 (rev. 1.0)

I. Using BSE Detector – 1/4

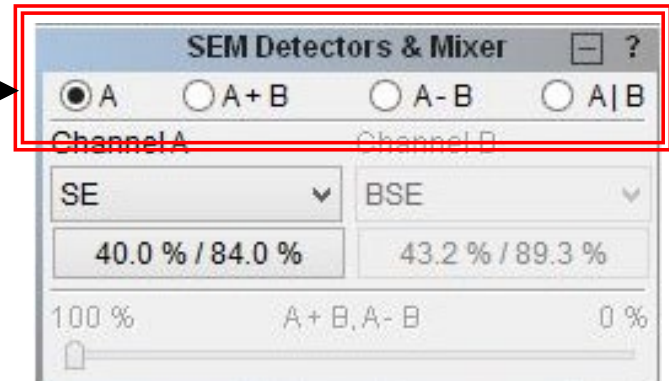
1. Confirm ***tallest position*** at ***tallest sample*** will **NEVER** be set to ***WD < 7.00 mm*** or the ***BSE Detector*** will **CRASH!**
2. Slowly turn the ***BSE Detector Knob*** clockwise to insert ***BSE Detector***



3. Carefully check that ***BSE Detector*** is extended into view of ***SEM Camera***

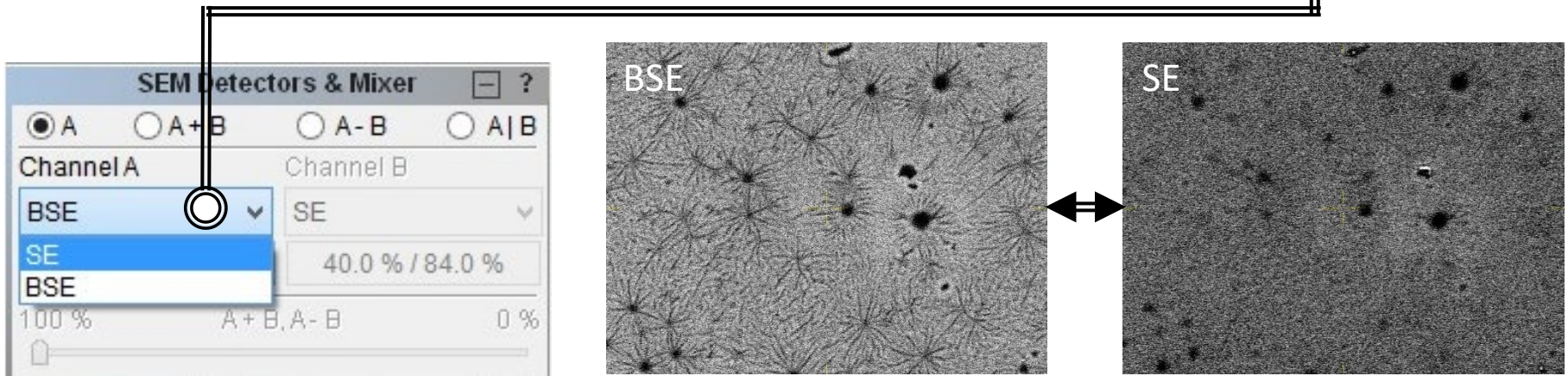
4. There are four options to use the ***BSE Detector***:

- I. ***A – either SE or BSE***
- II. ***A + B – Superimposed Additive***
- III. ***A – B – Superimposed Subtractive***
- IV. ***A | B – Parallel Detectors***

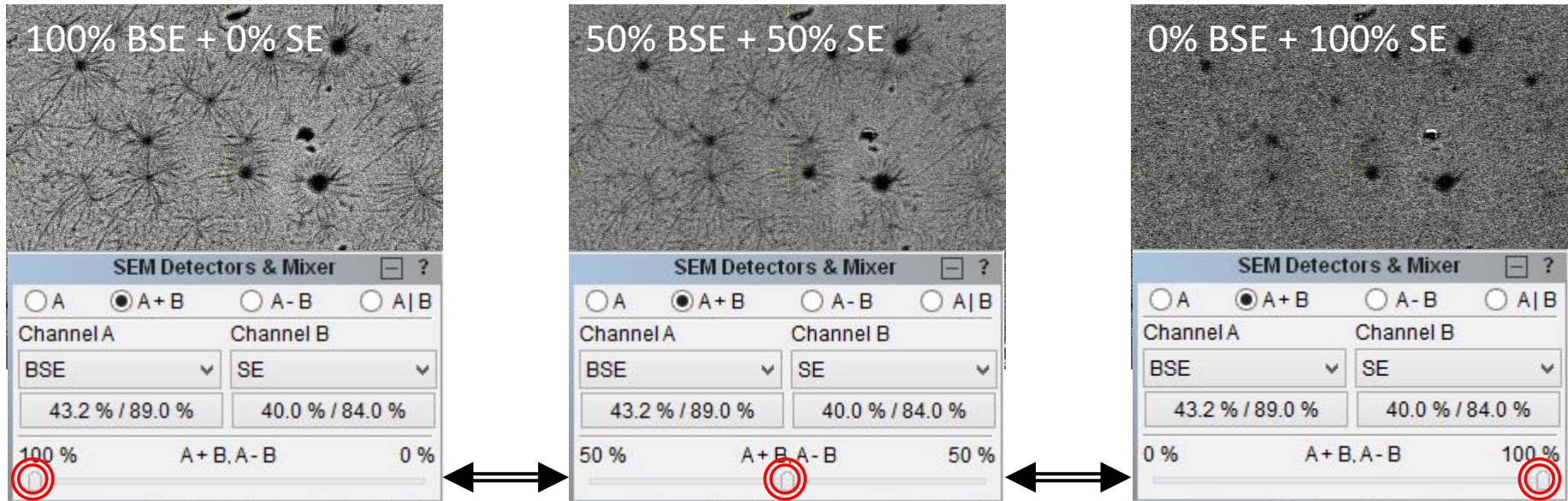


I. Using BSE Detector – 2/4

5. When using “A” select either *SE Detector* or *BSE Detector* via dropdown

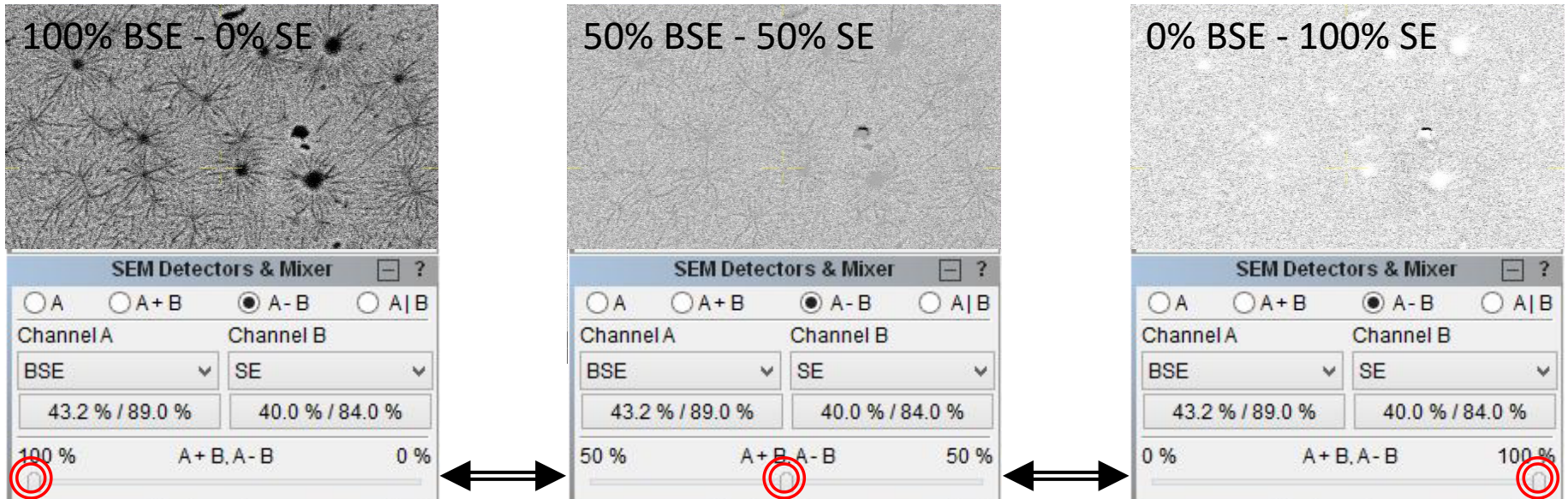


6. When using “A + B” adjust the slider to determine additive proportions

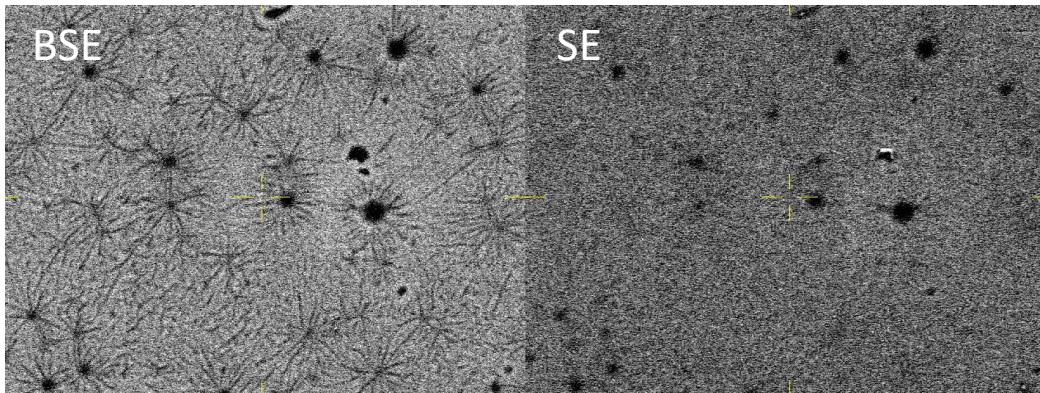


I. Using BSE Detector – 3/4

7. When using “A - B” adjust the slider to determine subtractive proportions



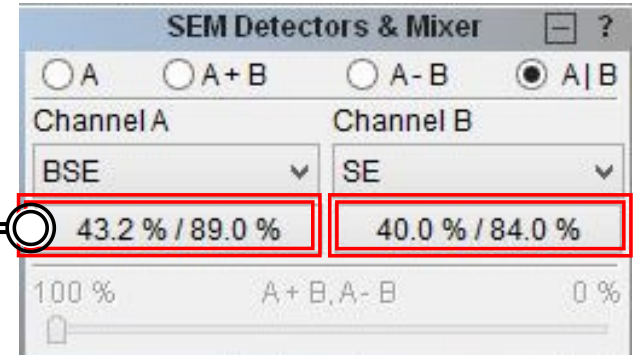
8. When using “A / B” both detectors are visible



I. Using BSE Detector – 4/4

9. You may need to adjust the **Brightness and Contrast** (either auto or manually) when changing between **SE** and **BSE Detectors**

10. Click on the **Brightness and Contrast indicator** for the desired **Detector**



11. Proceed to adjust **Brightness and Contrast**

12. When finished with **BSE Detector**, set detector back to **SE Detector** on "A"

13. Slowly turn the **BSE Detector Knob** counter-clockwise to retract **BSE Detector**

